

Calanus Life History Workshop

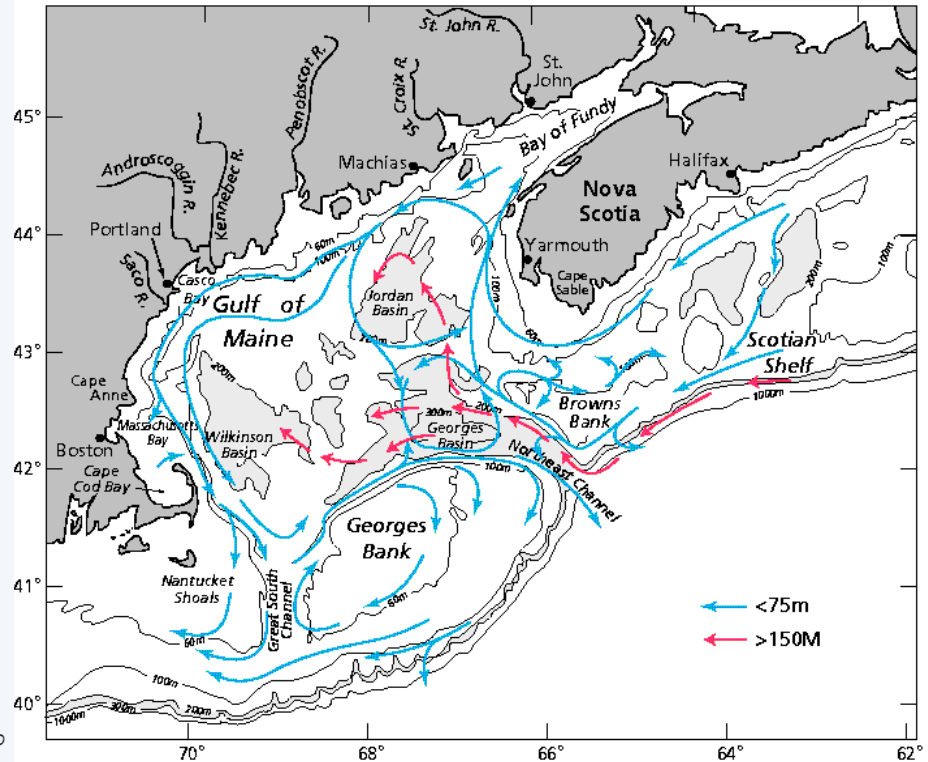
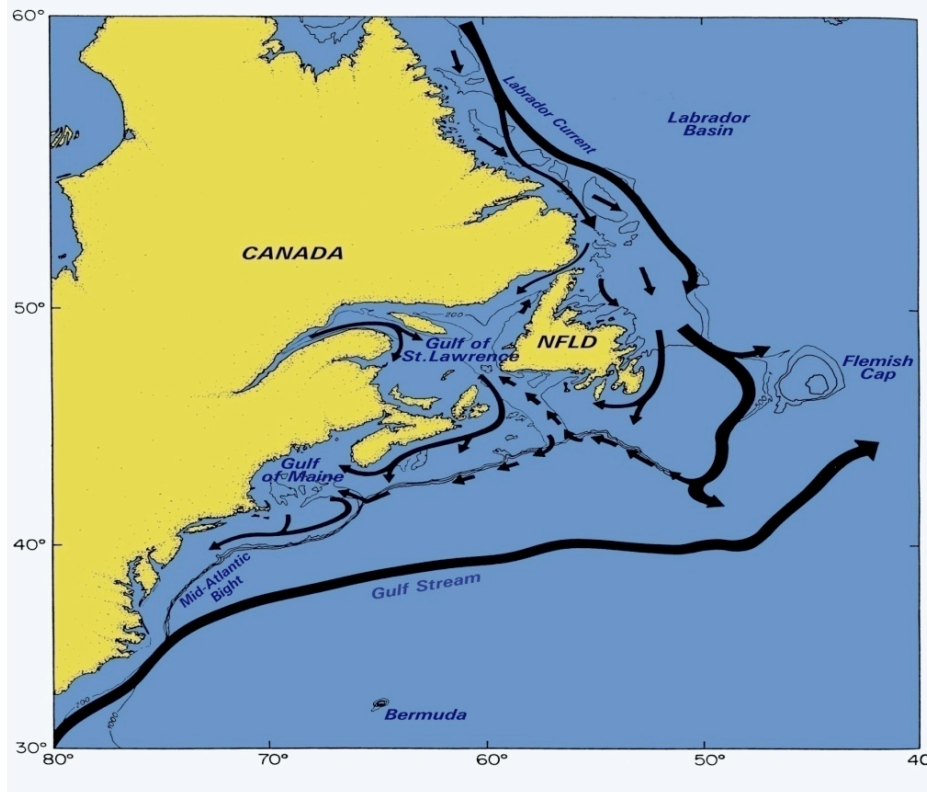
Abundance, distribution and dynamics of *C. finmarchicus* in the Gulf of Maine: the data and some implications

Jeffrey A. Runge

Rebecca J. Jones



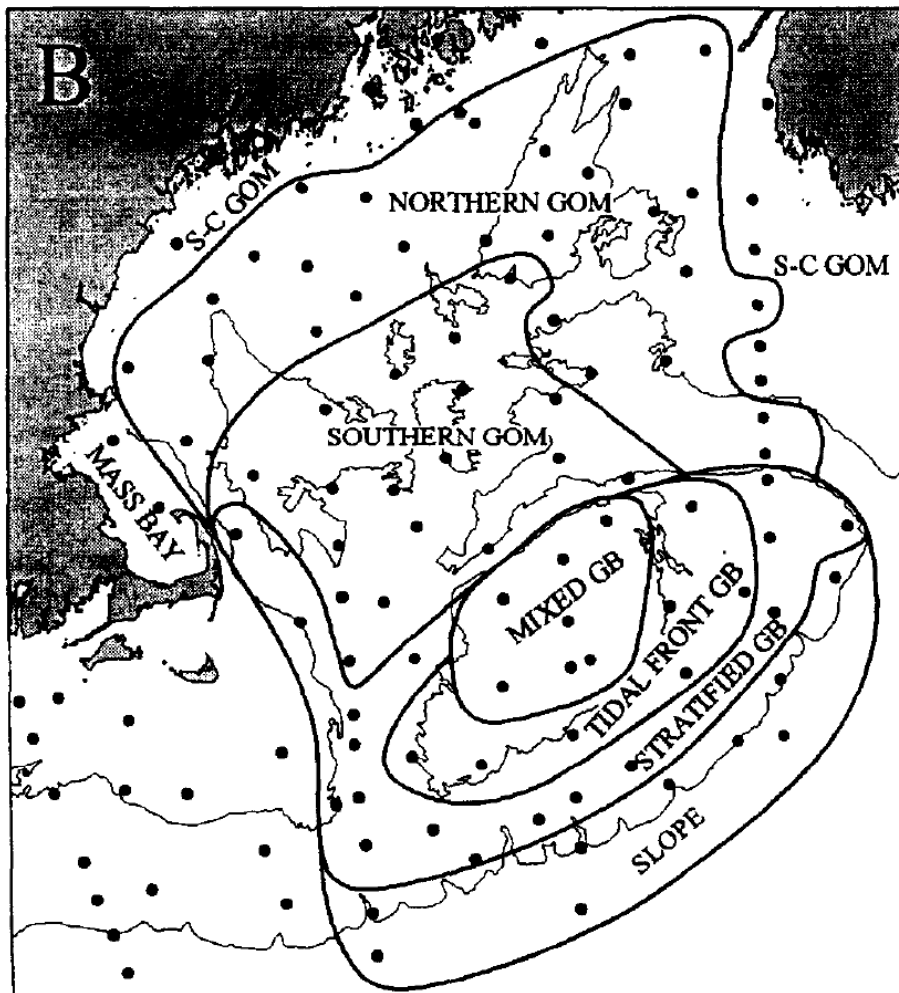
The Gulf of Maine: shelf sea basins between slope water and coastal shelves and banks



Data Sets

- NOAA MARMAP/ECOMON (333 μm bongo)
- U.S. GLOBEC NW Atlantic/Georges Bank Broadscale and Process Cruises (153 μm MOCNESS and bongo)
- Coastal Gulf of Maine (Univ. New Hampshire and U Maine): 200 μm ring net (AZMP protocol)
 - 2003-2008 (Jeffreys Ledge and Wilkinson Basin)
 - 2008- ongoing (mid-coast Maine)

Data Sets: MARMAP/ECOMON

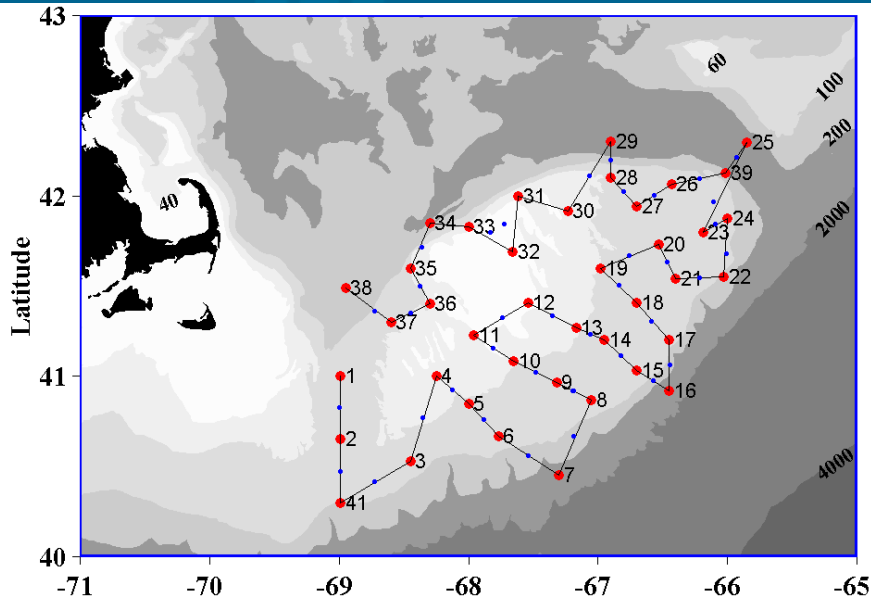


MARMAP:
1977-1987, 6-8 times annually
ECOMON: 1988-Ongoing, 6
times annually

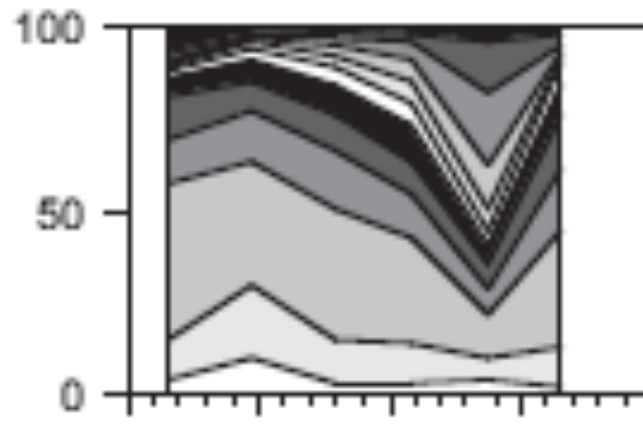
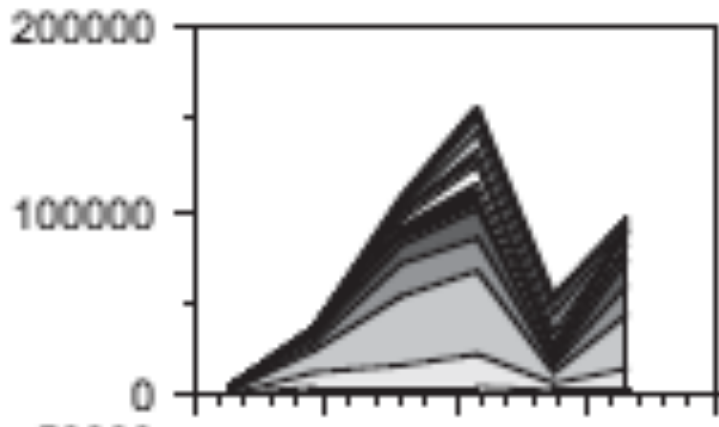
Locations of subareas
identified by cluster
analysis of seasonal
abundance of life history
stages

Meise and O'Reilly 1996

Data sets: U.S. GLOBEC Georges Bank

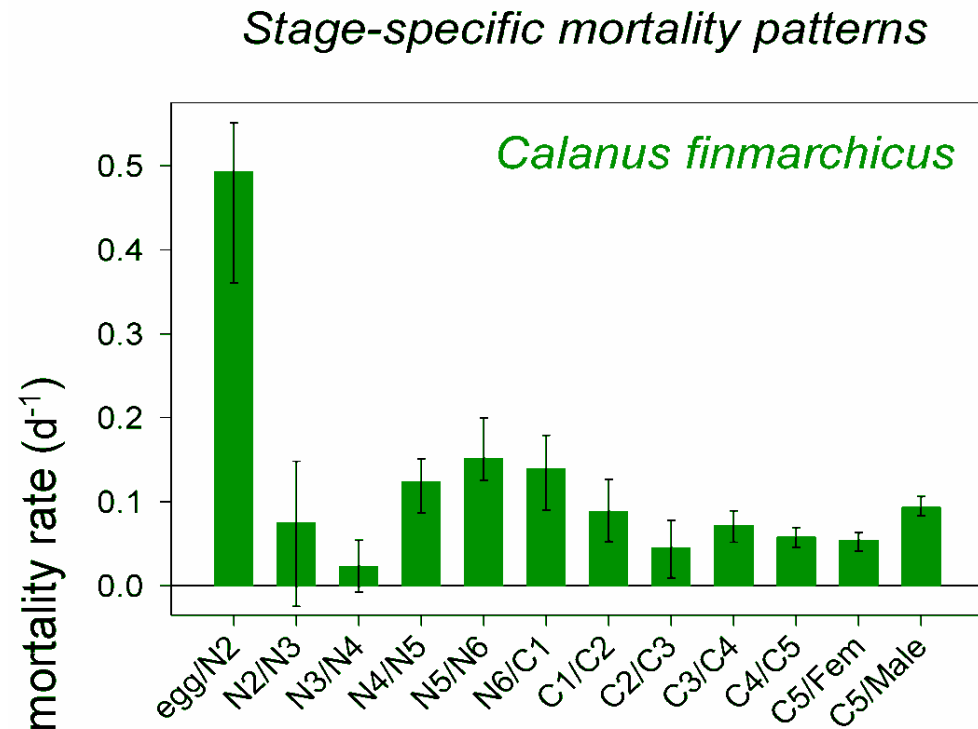
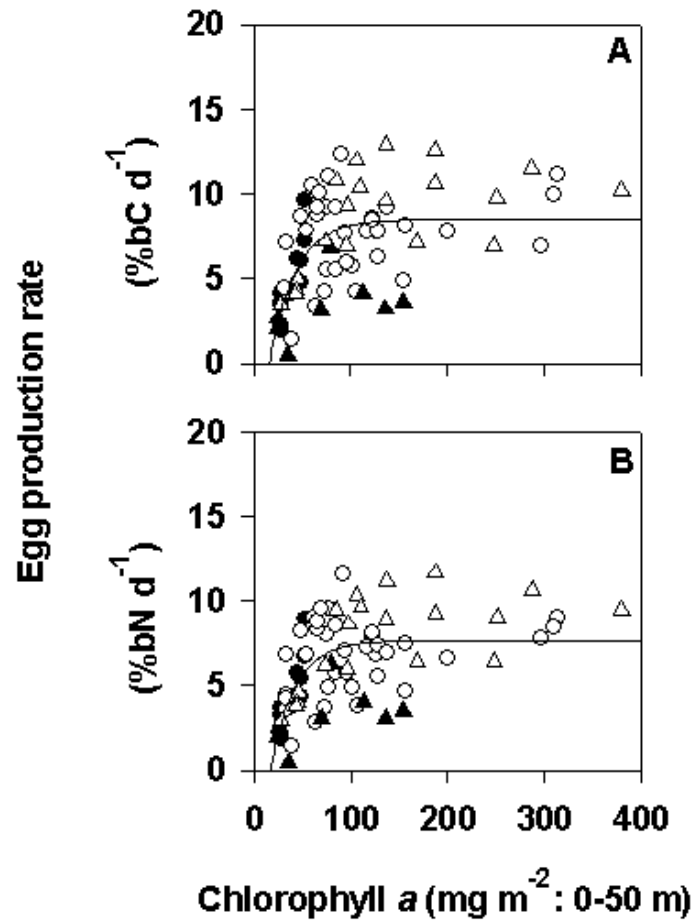


1995-1999 Jan-Jul



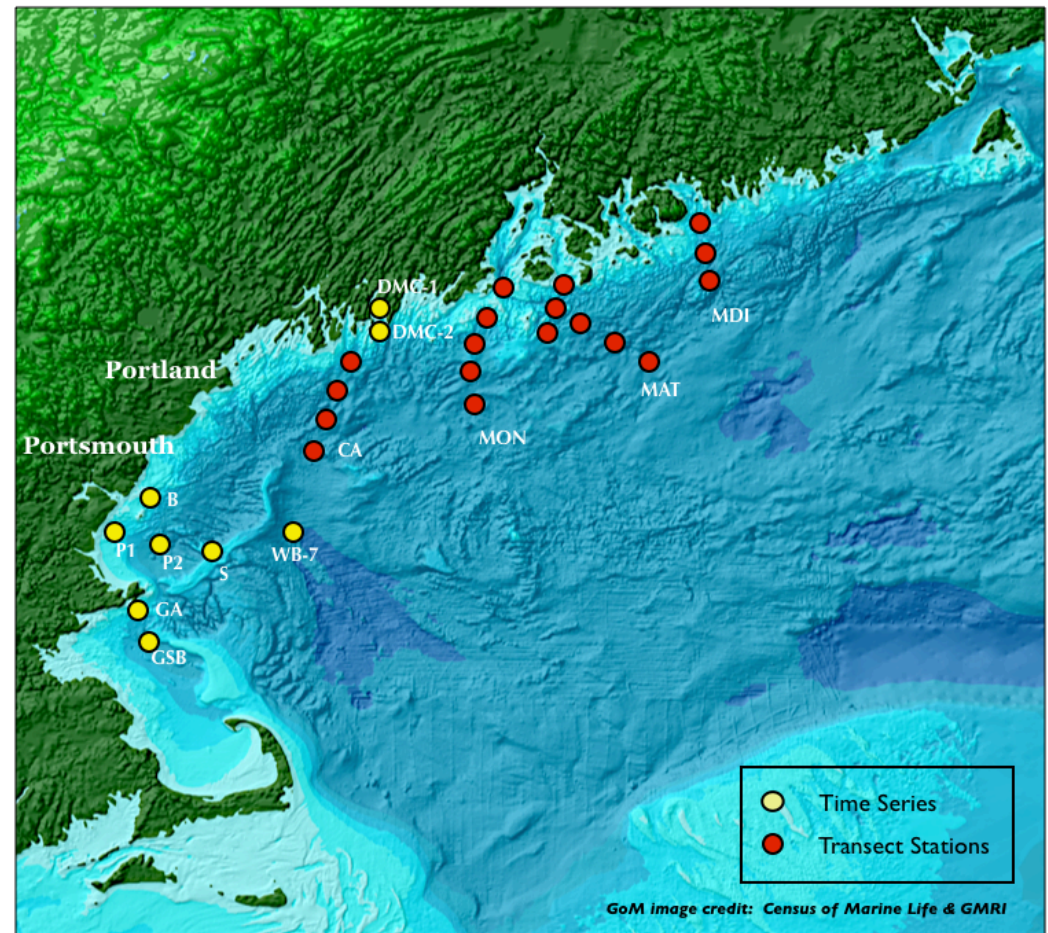
Cfin abundance
Jan- Jun
5-yr mean
All stages
(Durbin and Casas
2006)

U.S. GLOBEC Georges Bank: Egg production and mortality



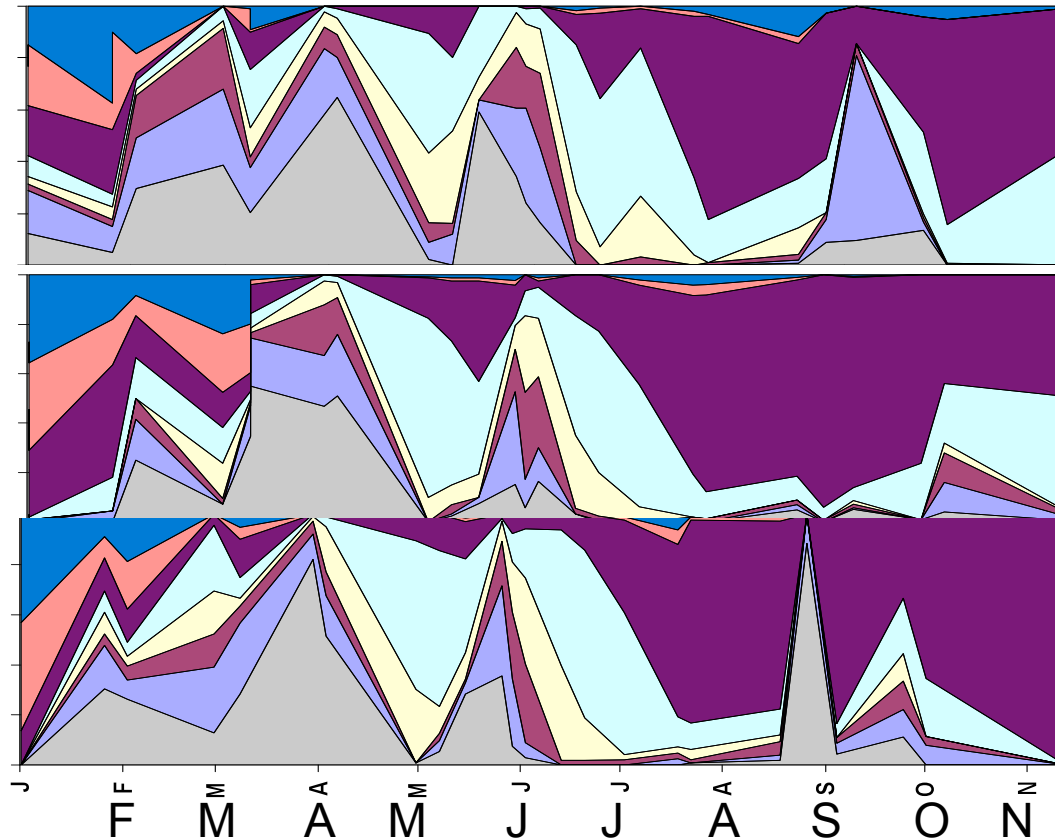
Coastal Gulf of Maine: Fixed stations and surveys

- Univ. New Hampshire
Wilkinson Basin (WB-7)
- Northeast Consortium
PULSE :western GoM:
(yellow fixed stations)
- U Maine/ Maine DMR
surveys: Red stations



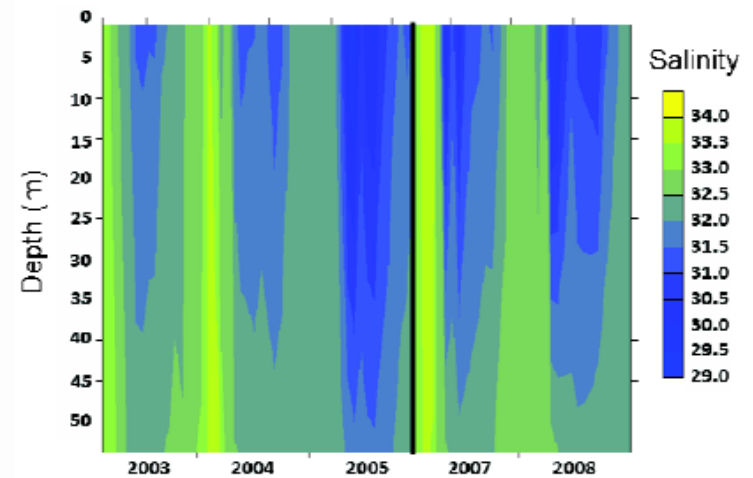
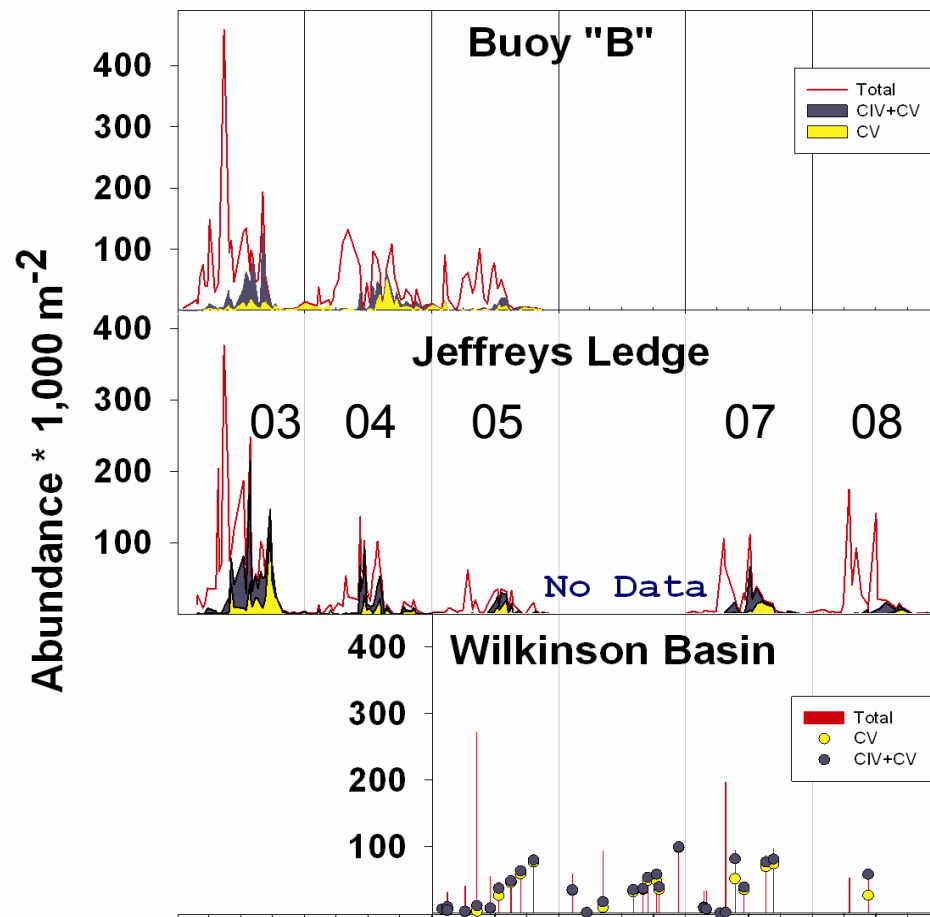
Calanus finmarchicus stage distribution: western Gulf of Maine

2007



■ NI-NVI ■ CI ■ CII ■ CIII ■ CIV ■ CV ■ Male ■ Female

Coastal Gulf of Maine Time Series



Coastal Gulf of Maine Time Series

